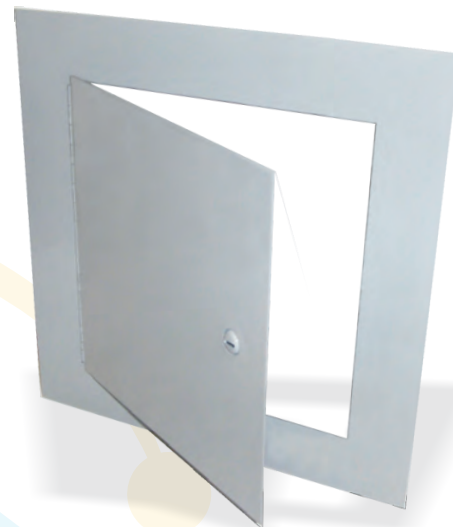


PROJECT - ADP SERIES

The “ADP” Series are manufactured from 20 gauge satin coat steel for corrosion resistance and come with a screwdriver operated cam-lock.

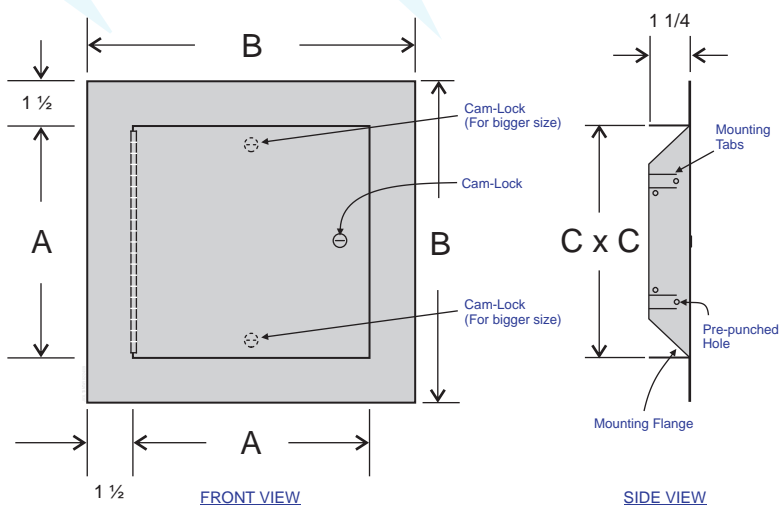
These doors are designed to install on drywalls, masonry and tiled surfaces. For easy and quick installation bend back all mounting tabs onto drywall or use pre-punched holes to secure the door onto adjacent studs.

Custom Sizes, powder coated finishing and various color options are available upon request.



STANDARD SIZES:

SIZES (INCH)	MODEL NUMBER	A (INCH)	B (INCH)	C (INCH)
6 x 6	ADP6	6	9	6
8 x 8	ADP8	8	11	8
10 x 10	ADP10	10	13	10
12 x 12	ADP12	12	15	12
14 x 14	ADP14	14	17	14
16 x 16*	ADP16	16	19	16
18 x 18*	ADP18	18	21	18
20 x 20*	ADP20	20	23	20
24 x 24*	ADP24	24	27	24
30 x 30*	ADP30	30	33	30



* Sizes 16" through 30" comes in 3 Cam-locks.

Contractor:		PROJECT - ADP SERIES		
Architect:	Job:	Date	Supersedes	Drawing No.
Engineer:	Date Submitted:			