

## ACCESS DOOR

### FLAT - ADF SERIES

The “**ADF**” Series are manufactured from 20 gauge satin coat steel for corrosion resistance and come with a screwdriver operated cam-lock.

These doors are featured with round cornered flange invisible hinge and flush mounted door panel. They can be installed on drywall, masonry and tiles surfaces.

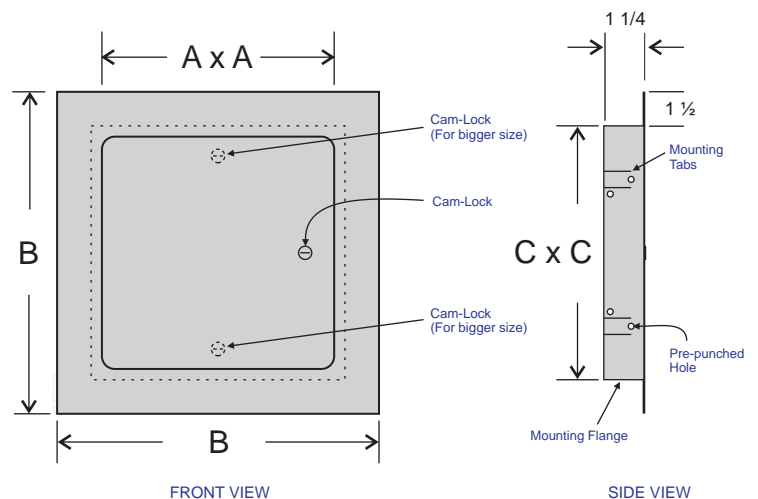
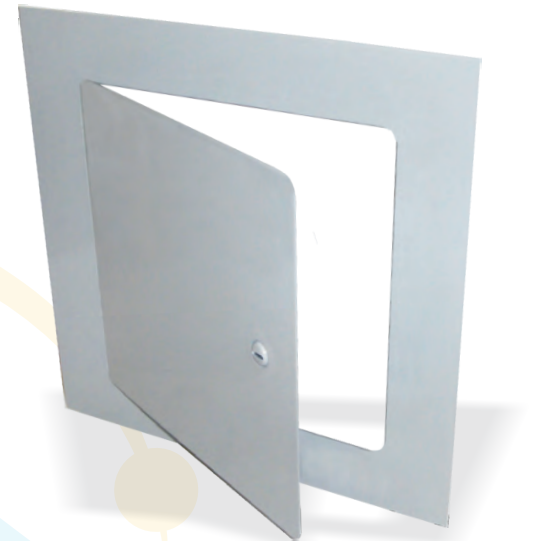
For easy and quick installation bend back all mounting tabs onto drywall or use pre-punched holes to secure the door onto adjacent studs.

**Custom Sizes, powder coated finishing and various color options are available upon request.**

#### STANDARD SIZES:

SIZES (INCH)	MODEL NUMBER	A (INCH)	B (INCH)	C (INCH)
6 x 6	ADF6	5	9	6
8 x 8	ADF8	7	11	8
10 x 10	ADF10	9	13	10
12 x 12	ADF12	11	15	12
14 x 14	ADF14	13	17	14
16 x 16	ADF16	15	19	16
18 x 18*	ADF18	17	21	18
20 x 20*	ADF20	19	23	20
24 x 24*	ADF24	23	27	24
30 x 30*	ADF30	29	33	30

\* Sizes 16” through 30” comes in 3 Cam-locks



Contractor:		FLAT - ADF SERIES		
Architect:	Job:	Date	Supersedes	Drawing No.
Engineer:	Date Submitted:			